

4KT Elephants Sewing Guide

Each year, Dunedin sends 4 thousand tonnes of textile waste to the Green Island landfill! This makes up 5% of the total waste, and 8% of the carbon emission produced by the landfill. **4KT Elephants is our way to take this burden, and makes it... a little lighter!**

Create your own elephant using this pattern and instructions and help us create a 4000 strong herd! You can donate your elephant to go to local children's charity Tedz4Kidz, or keep your new friend for your own.

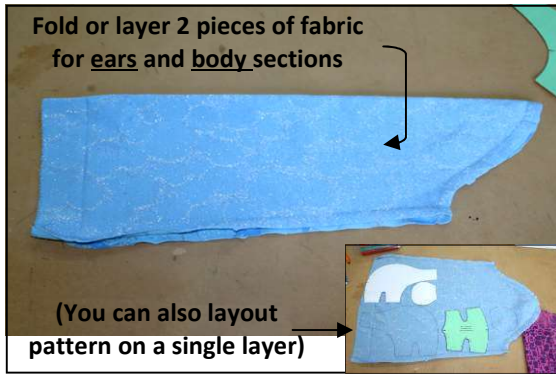
© Stitch Kitchen. Use of pattern, instructions and bag are protected by copyright and authorised for personal use, educational purposes, and use by non-commercial community groups and organisations. Not to be used for commercial purposes. Please contact Stitch Kitchen for further information.



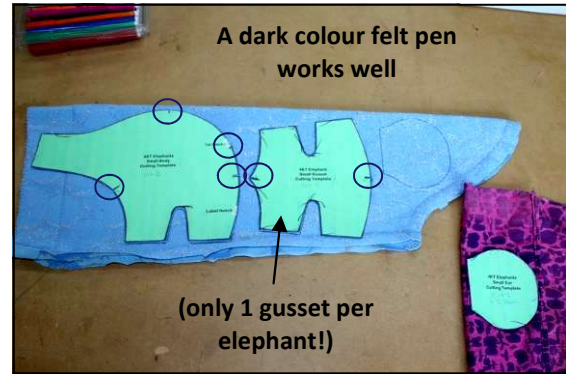
Important note on fabric selection:

- Closely woven, medium-weight fabrics work best (e.g. old shirts, non-stretch jeans, old duvet covers). Knit, sheer, thick or fiddly fabrics don't work out well. (Elephants are great to make from sentimental items you want to treasure!)
- Not all parts of your elephant have to be all the same fabric. Have fun with mixing and matching fabrics (of similar weight) with different colours/patterns.
- Please (re)wash your fabrics before you use them, especially if they've been stored for a while (wild elephants have their own smell—our elephants shouldn't).
- Cut fabric scraps you use for stuffing into bite-sizes pieces (lumpy elephants aren't as cuddly), and ideally mix fabric scraps with (CLEAN) old pillow stuffing (a mixed fibre diet) to make them smooth and soft to cuddle.
- Please get in touch if you have any questions!!

PLEASE READ RIGHT THROUGH INSTRUCTIONS BEFORE STARTING!



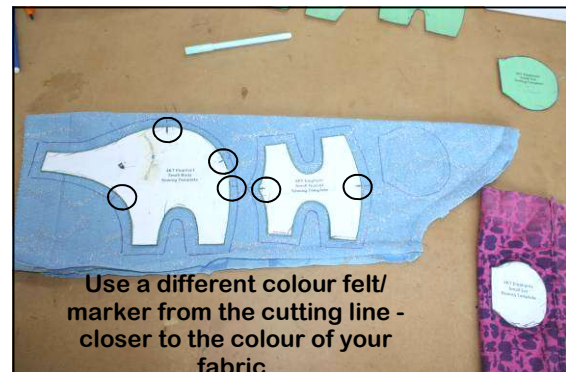
1. Layer two pieces of your chosen fabric, RIGHT SIDES together.



2. Trace around the CUTTING TEMPLATE. Check that all notches are marked.



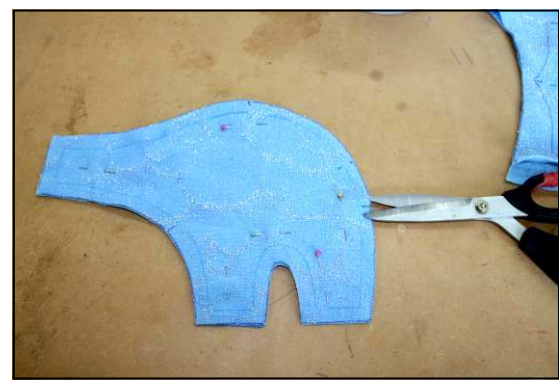
3. Place the STITCHING TEMPLATE within the cutting line.



4. Trace the stitching line onto your fabric, including all reference marks



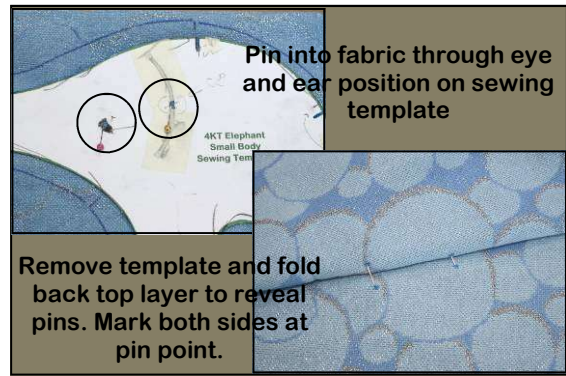
5. Cut out around each piece on the cutting line



6. Clip all notches, 6mm into seam allowance



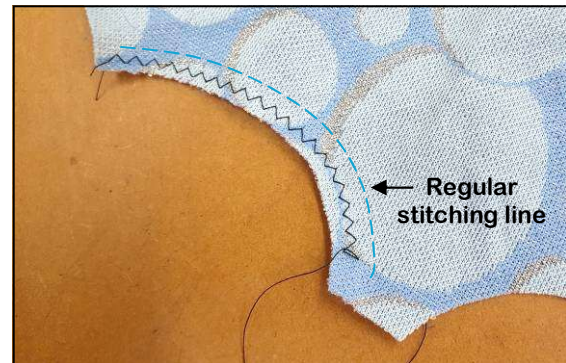
7. Collect your fabric scraps, and thread ends, for use in stuffing.



8. Mark Eye and Ear position on RIGHT SIDE of both body pieces



***Check that you have 2x body pieces, 4x ear pieces (2 pair) and 1 gusset.**



***If your chosen fabric is prone to fray, zig-zag seam allowances, before you continue.**



9. Pair up contrasting ear pieces and pin ear together, RIGHT SIDES together





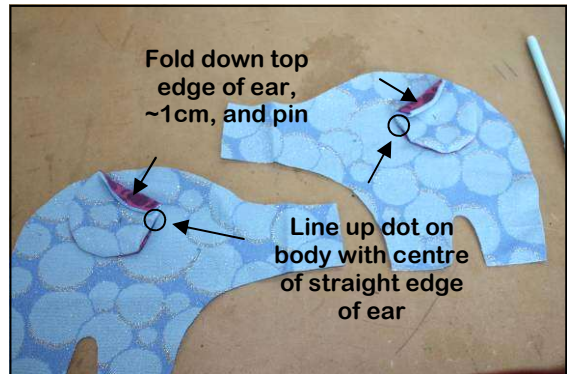
10. Sew ear pieces together around the CURVED EDGE ONLY



11. Turn ear right-way-out. Finger-press from the inside to smooth out the curve.



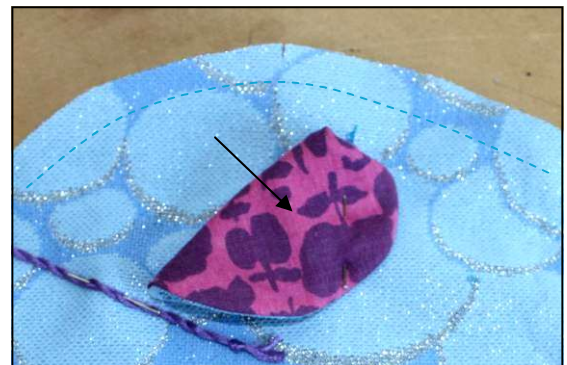
12. Fold in seam allowance on straight edge and press (if fabric will not press, top-stitch closed).



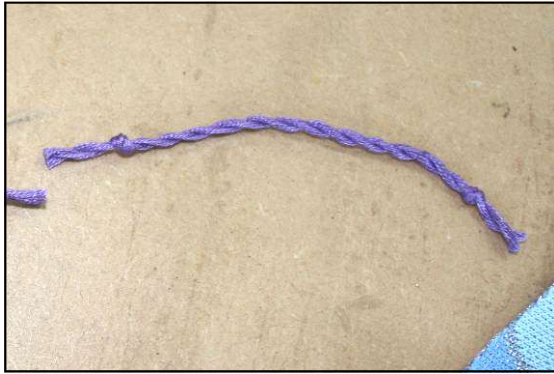
13. On the RIGHT SIDE of your elephant body pieces, position ears and pin in place.



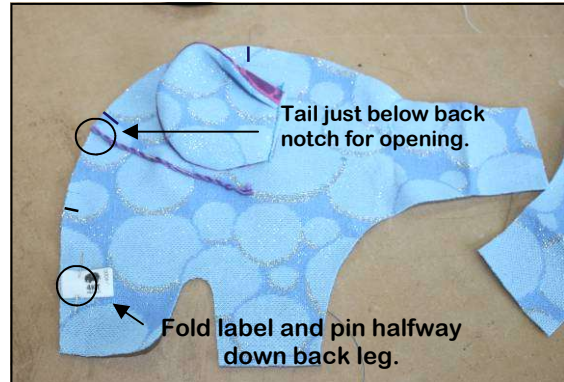
14. Top-stitch ears in place along the straight edge, catching the fold down. Back tack ends.



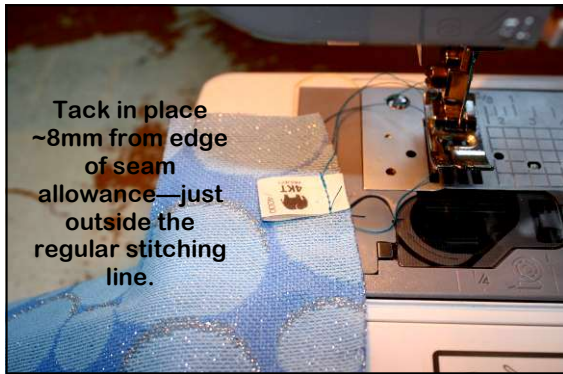
***If ears stick up over stitching line on your body pieces, pin the ears down away from the edge.**



15. Create a tail by use yarn as is; or knit, crochet, twist or plait a chain 5-8cm long.



16. On the RIGHT SIDE of one of your elephant body pieces, pin tail and label in place



17. Tack tail and label in place.



* Keep tail pinned in place on the body to prevent it getting caught in seams (as for the ears).



18. On each of the two body pieces separately, stay-stitch between notches, with 8mm seam allowance



19. With RIGHT SIDES together, pin gusset to one side of the body, matching notches at front and back.



Hand wind the stitches at start and finish to ensure you don't sew beyond the notches.
Do extra reinforcing with back-taking at start and finish.

20. Stitch from notch, reinforcing with back-tacking, around legs, and stop on notch at other end.

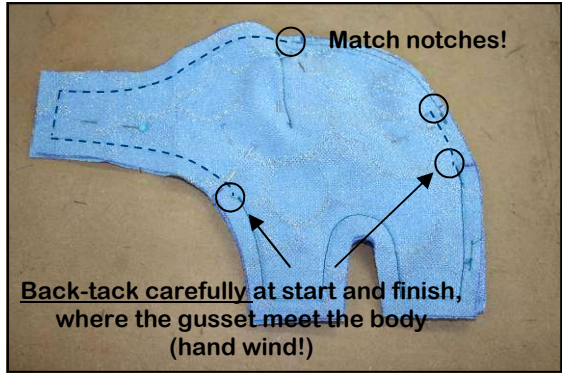


* To stitch around tight curves, stretch the fabric to open the curve out (and no speeding).



(Trim threads as you go)

21. Align leg gusset with second side of the elephant body, carefully matching notches, and stitch.



Match notches!

Back-tack carefully at start and finish, where the gusset meet the body (hand wind!)

22. Pin body pieces, RIGHT SIDES together. Sew as shown.



23. Trim the corners of the body and gusset.



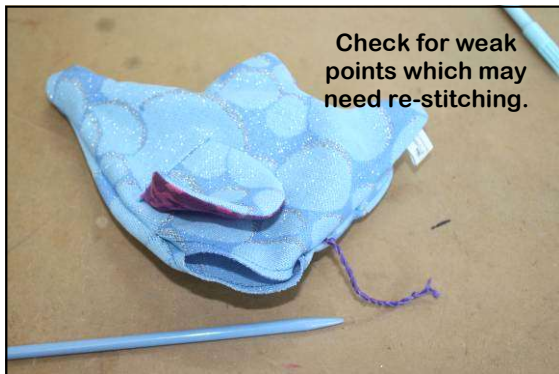
24. Clip all inner-curve sections.



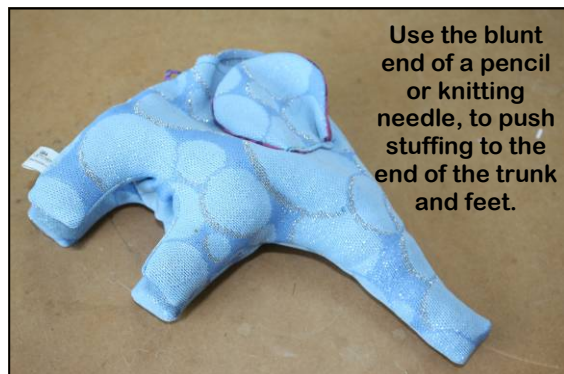
***If you had previously zig-zagged your seam allowances, after clipping you will need to re-do.**



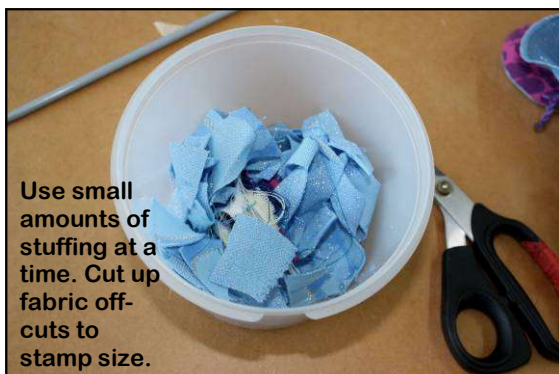
25. Turn your elephant right side out



26. Push seams out with your fingers & knitting needle.



27. Stuff; starting with legs, then trunk. Pack firmly.



***Include off-cuts and thread scraps from your elephant, alternating with conventional stuffing material.**



*** If you find a gap or pop a seam open while stuffing, you can hand sew it closed from the outside.**



28. Hand stitch the opening closed with ladder stitch, using the stay-stitching as a guide.



29. Using embroidery floss, hand sew the two eyes.



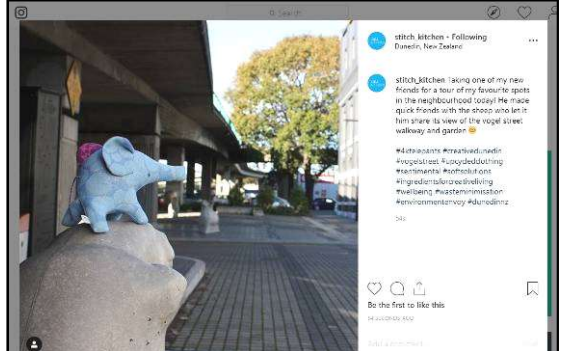
30. Ask us for the number, & use a fine-tip permanent marker to record this on the tag.



Congratulations! Your elephant is complete! Time for a happy dance.



Take your elephant to your favourite Dunedin places to meet new friends.



Share your photos with us on instagram @4KTelephants, #4ktelephants